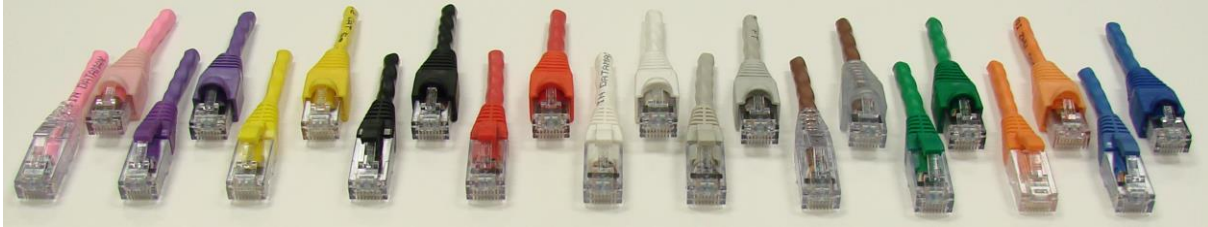


Cat 6 Patch Cords



ACI's Cat 6 Patch Cords are next step up in performance for your twisted pair network. Category 6 patch cords, manufactured to meet TIA/EIA-568-C requirements, are interoperable with different OEM's Category 6 Channels. They are backward compatible with legacy Cat 3, 4, 5, and 5e networks.

Applications: Category 6 Channels, 10/100/1000Base T Ethernet, Token Ring, and ATM over twisted pair.

Standards: ANSI/TIA/EIA-568-C.2

ACI offers 2 standard versions of Cat 6 patch cords to meet market requirements:

- Value patch cords: Manufactured by ACI using Cat 6 compliant connectors and cable.
- Channel Cat 6 patch cords, 100% tested using Softing test instruments to meet EIA/TIA-568-C requirements for Category 6 patch cords.

Standard Options; please specify:

- Cable and Boot Color
 - Blue, Beige, Black, Brown, Green, Grey, Orange, Pink, Red, Violet, White, and Yellow.
- Wiring
 - 568B- Straight thru
 - 568A-Straight thru
 - 568A-568B-Crossover
 - Gigabit Crossover
- Cable
 - Stranded (Standard)
 - Solid
 - PVC
 - Plenum
- Add Snag-less Boots, Specify Color
 - Slide on
 - Slimline Snag-less
- Labels (One length label included)
 - No labels
 - Length label on both ends
 - Custom: Part number, serial number, company name, phone number, logo, we will design
 - Optional testing 100% for channel Patch Cord Compliance

