

## Products

## 2023

*Cable Assembly Solutions at the Speed of Light*





Peggy Kovling – ACI Founder

Peggy Kovling credits her extensive knowledge of the cable business, along with her abilities in customer relationship management, to her many years at Belden, a major cable manufacturer. Her dedication to satisfying ACI's customers has been a key to ACI's success. While maintaining a focus on quality control, she makes certain that her staff continually address our customer's chief concerns — accuracy, consistency, and an order placement process that is simple, painless, and efficient.

“I have worked for many good cable companies, but without fail, bad decisions were made at the customer's expense. Past business experiences allow us to bypass this costly learning curve. We can focus on offering the best products and unparalleled customer service.”

*1700 Capital Avenue, Suite 100, Plano, TX 75074  
Toll Free: (866) 670-4010 Local: (972) 484-8500  
[www.AccurateConnections.com](http://www.AccurateConnections.com)*



At ACI, we know that customers don't always need an "off the shelf" solution. We provide both the best service and the highest quality custom copper and fiber assemblies available. With us, you'll be certain that customer's needs are satisfied.

Accurate Connections provides customers with high quality products, quickly. We offer both copper and fiber, saving time and money no matter what solution may be needed. Years of experience permits us to deliver 100% tested products, communicate knowledgeably, and follow-up promptly.



*Our wide range of cable assemblies will satisfy your specific needs.*



1700 Capital Avenue, Suite 100, Plano, TX 75074  
Toll Free: (866) 670-4010 Local: (972) 484-8500  
[www.AccurateConnections.com](http://www.AccurateConnections.com)

# Products

Accurate Connections, Inc. (ACI), a cable assembly manufacturer in Plano, Texas, currently provides both fiber optic and copper cable assemblies for the Datacom and Telecom industries. We provide both high speed fiber optic and copper assemblies. We can satisfy your connectivity needs in a single order.

All our assemblies are 100% tested. Fiber optic assemblies are serialized and the test results are provided with the assemblies. We are also committed to providing the best service possible to our clients through flexibility, superior quality, and reliable service.

Choose ACI when considering your future bids and product sourcing. Our friendly, knowledgeable, professional team will provide the information you need quickly and courteously.

Below is a short list of assemblies that we are currently manufacturing that may interest you.

## **Fiber Optic Assemblies**

- Multimode
- Single mode
- Pre-terminated Multi-fiber Assemblies
- Pulling Grips
- ST, SC, FC, LC, MU, MTRJ, SC-APC, FC-APC, Panduit Optijack
- Corning, Optical Cable Corp., Systimax, and Others

## **Modular Patch Cords**

- Category 5E
- Category 6 & 6A
- Category 6 & 6A 28AWG
- Category 8
- Shielded
- Quabbin Datamax 6 Certified Assembler
- Panduit Snagless Plugs
- Various Colors, Custom Labels, Snagless and Slim-line Boots
- Stranded, Solid, PVC, or Plenum

*1700 Capital Avenue, Suite 100, Plano, TX 75074  
Toll Free: (866) 670-4010 Local: (972) 484-8500  
[www.AccurateConnections.com](http://www.AccurateConnections.com)*

### Choose Your Connection

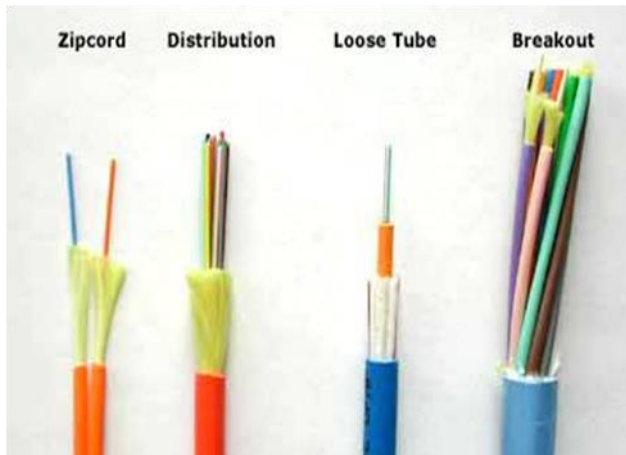
- ST, SC, FC, LC, MU, MTRJ, ESCON
- FC(APC), SC(APC), LC(APC),



### Simplex or Duplex

- 1.6 mm
- 2.0 mm
- 2.9mm
- 2 Fiber 4.8mm round
- 2 Fiber 3.0mm round
- Riser or Plenum

1700 Capital Avenue, Suite 100, Plano, TX 75074  
Toll Free: (866) 670-4010 Local: (972) 484-8500  
[www.AccurateConnections.com](http://www.AccurateConnections.com)



### **Fiber Trunk Types**

- Multimode 50/125 and 62.5/125
- Laser Enhanced 50/125
- Single Mode
- Pigtails
- Mode Conditioning
- I/O PVC and Plenum
- Available in a variety of configurations

### **Multiple Colors and Custom Construction and Polish**

- Flat
- PC
- UPC
- APC



1700 Capital Avenue, Suite 100, Plano, TX 75074  
 Toll Free: (866) 670-4010 Local: (972) 484-8500  
[www.AccurateConnections.com](http://www.AccurateConnections.com)

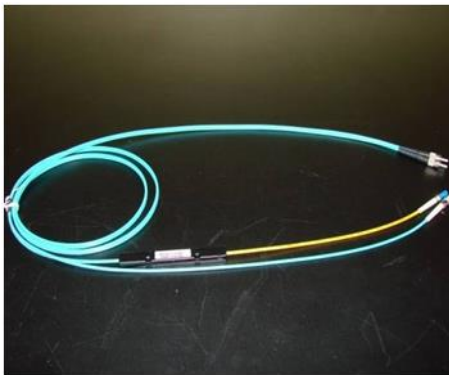


## Multi Mode and Single Mode Jumpers

ACI fabricates fiber optic assemblies to meet or exceed EIA/TIA 568-B-3 specifications. All are tested and documented.

Standard Duplex assemblies are configured to transmit and receive duplex LC and SC. Jumpers are clipped A to B, jumpers also available with Single-Body connector design.

### Mode Conditioning

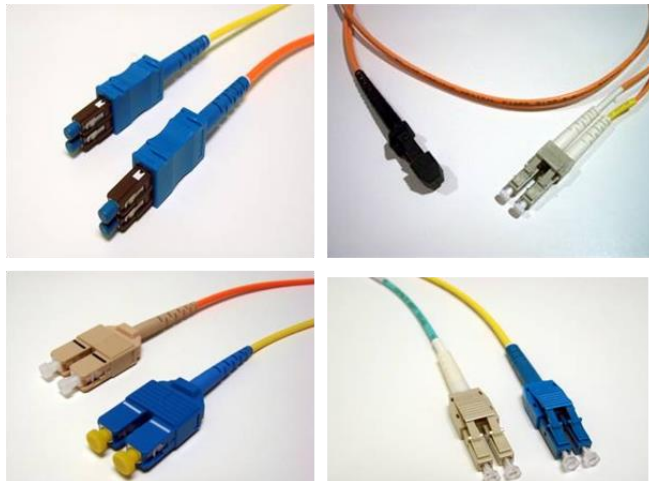


ACI's new hybrid fiber optic cable combines Multi Mode and Single Mode fibers into a single, unified jacket, providing a central network point of administration for open systems, FDDI, and FICON applications. Benefits include integration of Mainframe and LAN networks, increased bandwidth, and a savings in material and labor. Trunk and Jumper terminations are available.

### Fiber Jumper Types

(Simplex and Duplex Jumpers)

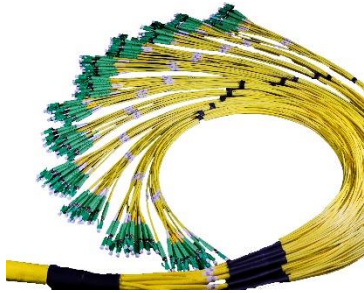
- 50/125 Standard Grade
- 62.5/125
- 50/125 Laser Enhanced
- 10 Gig 300 meters (Aqua Jacket)
- 50/125 Laser Enhanced
- 10 Gig 550 meters (Aqua Jacket)



1700 Capital Avenue, Suite 100, Plano, TX 75074  
Toll Free: (866) 670-4010 Local: (972) 484-8500  
[www.AccurateConnections.com](http://www.AccurateConnections.com)

## Featured Fiber Products

### Multi-Fiber Assemblies



- Multimode, Singlemode
- Up to 432 Fiber Construction
- Premise, OSP, OSP Hybrid, Armored
- Customized Breakout Length, Stagger, Labels, Pulling Grips
- Color Furcation Options

### MTP/MPO Assemblies



- MTP-MTP Trunks, MTP-LC Harnesses
- MTP Standard, Elite and MTP-PRO,
- Plenum, Indoor/Outdoor
- 12-144 Fiber Construction
- Standard Polarity A, B, C, Universal or Customized Polarity

### L-Jack, R-Jack Ruggedized Connector Assemblies



- IP68 Rated LC Duplex and RJ45 Ruggedized Harsh Environment Connectors
- Protects from Liquid Moisture, and Dust
- Crush Resistant to 450 lbs
- Pull Strength of 400 lbs

*1700 Capital Avenue, Suite 100, Plano, TX 75074*

*Toll Free: (866) 670-4010 Local: (972) 484-8500*

*[www.AccurateConnections.com](http://www.AccurateConnections.com)*



## **FTTA IP-LC Connector Assemblies**



- Duplex LC for Any OSP Application
- IP68 Rated Ruggedized Connectors
- Quick Bayonet Locking
- ODVA Compatible
- IP-LC Adapter/Bulkhead available

## **IP-MPO Connector Assemblies**



- Multi Fiber OSP Assembly/Enclosure
- IP68 Rated Ruggedized Connectors
- ODVA Compatible
- IP-MPO Adapter/Bulkhead available

## **FTTA ODC/RFX Compatible Connector Assemblies**



- Plug & Receptacle Type Available
- IP67 Rated Metal Housing Connectors
- ODC/RFX Compatible

## **FTTX OCTIS and FullAXS Connector Assemblies**



- SFP/SFP+ Small Form Factor I/O application
- Small Cell and Next-Generation RRU/RRH
- FullAXS Compatible Connector
- OSP LC Jumper Only Available

*1700 Capital Avenue, Suite 100, Plano, TX 75074*

*Toll Free: (866) 670-4010 Local: (972) 484-8500*

*[www.AccurateConnections.com](http://www.AccurateConnections.com)*

## **FTTH Optitap Connector Assemblies**



- Network access and drop cable
- Optitap Compatible
- Single and 2 Fiber
- Terminated Optitap to Optiap, Optiap to SC APC Cable

## **Featured Copper Products**

### **Category Patch Cord Bundled Assemblies**



- CAT 5E, 6, 6A Bundles
- Leg Count from 2-24
- Velcro or Expendo Mesh Options
- Special Breakout Length, Stagger, Labeling and Pulling Grip Options available
- Multiple Color Jacket

### **Outdoor Patch Cable Assemblies**

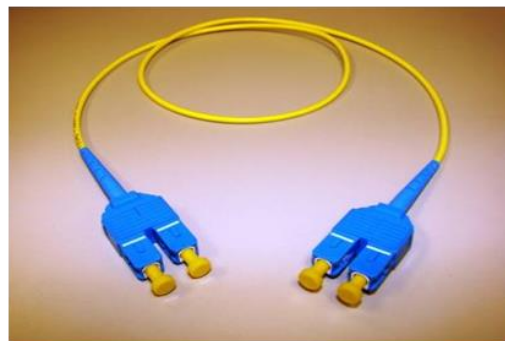
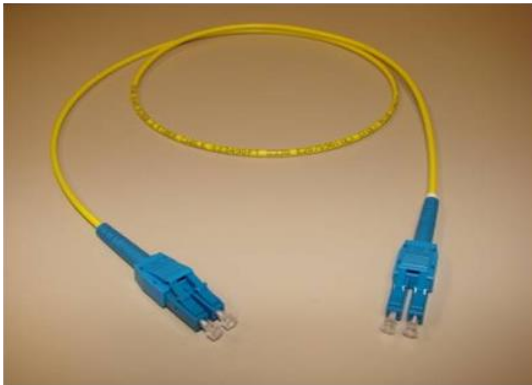


- CAT 5E, 6, 6A
- UTP, F/UTP, CMR and CMP rated
- Booted or Non-Booted
- Multiple Color Jacket

*1700 Capital Avenue, Suite 100, Plano, TX 75074  
Toll Free: (866) 670-4010 Local: (972) 484-8500  
[www.AccurateConnections.com](http://www.AccurateConnections.com)*

## About ACI Products

- LC, SC, MU, Uniboot construction. It improves cable management, ½ the size when compared with zip cable.
- Single round 2 fibers cable in 3.0mm O.D.
- Multi-mode 62.5/125 and 50/125 CL 600
- Laser enhanced 50/125 10Gig LL 300
- Single-mode 8.3/125 SMF-28e PC or APC end face.
- Available in riser and plenum construction.
- All jumpers are of custom length.
- 100% tested
- Labeled with part numbers
- Custom label types are available.
- Plastic housing and boot made from UL rated materials.
- All products are compliant with Telcordia GR-326, and TIA/EIA 604-10 standards.



1700 Capital Avenue, Suite 100, Plano, TX 75074  
Toll Free: (866) 670-4010 Local: (972) 484-8500  
[www.AccurateConnections.com](http://www.AccurateConnections.com)

***Brand name components and fiber are available upon request.***



Laser-enhanced, 10 Gigabit Multimode Patch Cords are Clear Curve and Ultra Bend for both minimum back reflections. They are clearly identified by their aqua jacket. ACI's standard 10 gig patch cords are built using LL300 rated optical fiber.

#### **Polish**

- PC <-45 return loss, I/L <0.4Db, MM
- UPC <-55 return loss, I/L <0.3dB, SM
- APC <-65 return loss, I/L <0.3dB, SM

#### **Jacket Material**

- PVC
- Plenum

#### **Labels**

- Part Number and Serial Number
- Labels at Both Ends Correspond
- Test Report Document
- Custom Labels Available

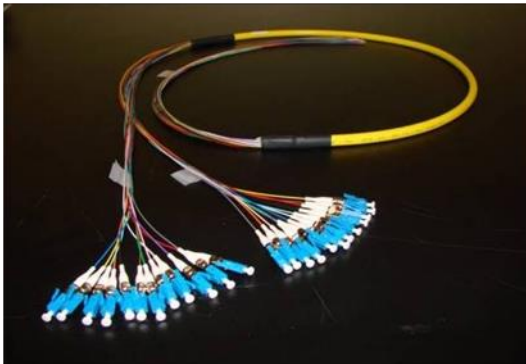
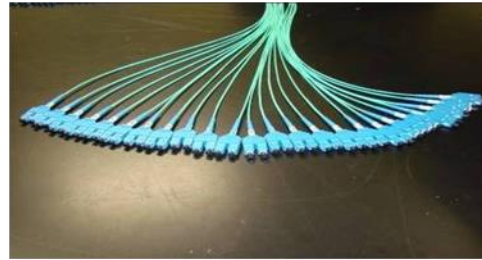


*1700 Capital Avenue, Suite 100, Plano, TX 75074  
Toll Free: (866) 670-4010 Local: (972) 484-8500  
[www.AccurateConnections.com](http://www.AccurateConnections.com)*

# Fiber Optic Trunk Cables

## Custom Breakout Trunks

Laser-enhanced, 10 Gigabit multimode trunks are Ultra Polished for both minimum back reflection and maximum connector performance. They are clearly identified by the aqua jacket. ACI's standard 10 gig trunks are LL300 meter rated.



## Factory Terminated Multi-fiber Assemblies

- Fiber Construction
- Indoor/Outdoor
- Loose Tube
- Aerial/Duct
- Burial
- Messenger
- Armored Trunk and Pigtails

1700 Capital Avenue, Suite 100, Plano, TX 75074  
Toll Free: (866) 670-4010 Local: (972) 484-8500  
[www.AccurateConnections.com](http://www.AccurateConnections.com)

***Let us work with you to design and document the assemblies on your next project.***

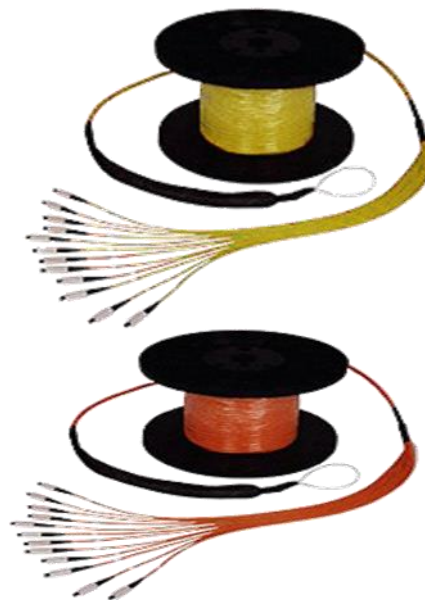
ACI carries connectors and cable from top manufacturers such as Corning, Tyco, AFOP, Optical Cable Corp., and more.

- Laser-enhanced, 10 Gigabit
- Multimode Harness are polished for both minimum back reflection and maximum connector performance.



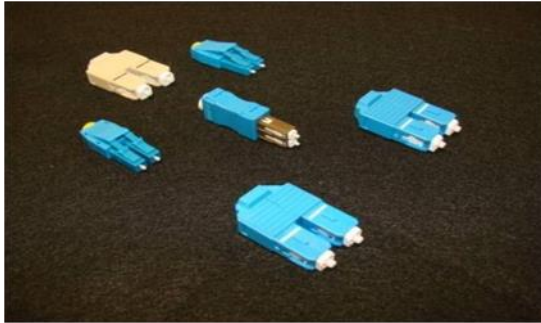
### **Fiber Optic Trunk Cable with Custom Breakouts**

- 900 uM Buffers
- 2.0 and 3.0mm Furcation Tube
- Epoxy Plugs
- Custom Lengths
- Pulling Eyes Customized by Assembly.



1700 Capital Avenue, Suite 100, Plano, TX 75074  
Toll Free: (866) 670-4010 Local: (972) 484-8500  
[www.AccurateConnections.com](http://www.AccurateConnections.com)





### **Loop Backs**

- Multi mode 50/125
- Multi mode 62.5/125
- Single mode 8.3/125
- 50/125 Laser Enhanced

### **VersaLink Cables**

Versatile link plastic fiber optic cables provide ready-made solutions for rapid installations for any industrial or commercial applications

- All patch cords manufactured with 1 mm diameter plastic optical fiber.
- Compatible with Avago Versatile Link family of connectors and fiber optic components.
- Direct replacement for Avago part number HFBR-EU550
- Duplex or Simplex non or latching connector.
- UL-rated fiber cable and connections.
- Connector terminations are crimped and epoxy for maximum retention.
- Terminations are polished to a 1 $\mu$ m finish to ensure high coupling efficiency. Standard and custom lengths available.



### **Small Form Factor Pre-wired Conversion Kits**



Accurate Connections offers patch panels and wall mount enclosures.

- Universal mounting brackets for full compatibility with standard 19 -inch and 23-inch racks and cabinets.
- Designation labeling on front and rear door
- Available with pre-terminated multi fiber trunks to save time and money.
- Easy to install 6-pack bulkhead/adapter plates (ST, FC, SC, SC Duplex, SMA, MTRJ, LC, MU, ESCON , etc)
- Optional Splice Trays

1700 Capital Avenue, Suite 100, Plano, TX 75074  
Toll Free: (866) 670-4010 Local: (972) 484-8500  
[www.AccurateConnections.com](http://www.AccurateConnections.com)

## Patch Panels



- 1RU patch panel
- Dimension: 7"H x 19"W x 6"D
- 19", 23", or 24" mounting available
- Standard colors are black or white
- Capacity up to 96 Fiber port
- Coupler Types available:
  - LC Duplex
  - SC Duplex
  - MT-RJ
  - MU
  - ESCON

\*\*\* Custom silk screen and color code coupler available\*\*\*\*

- 4RU patch panel
- Dimension: 7"H x 19"W x 15.5"D
- 19", 23", or 24" mounting available
- Standard colors are black or white
- Capacity up to 288 Fiber port
- See thru Plexiglas front cover
- High density cassettes industry standard spacing
- Coupler Types available:
  - LC Duplex
  - SC Duplex
  - MT-RJ
  - MU
  - ESCON

\*\*\* Custom silk screen and color code coupler available\*\*\*\*



1700 Capital Avenue, Suite 100, Plano, TX 75074  
 Toll Free: (866) 670-4010 Local: (972) 484-8500  
[www.AccurateConnections.com](http://www.AccurateConnections.com)

## **Bundle Trunks CAT 5e, 6 and 6A Assemblies**

Special Custom and Standard, Pig Tails or Full assemblies with jacks or plugs.



### **CAT 5e, 6 & 6A Assemblies** **CAT 6 & 6A 28AWG** **Assemblies**

Special Custom and Standard Pre-wired Blocks with Tails



### **110 Assemblies**

- 1, 2, 3 and 4 Pair
- Custom and Standard
- Pre-wired Blocks with Tails



*1700 Capital Avenue, Suite 100, Plano, TX 75074  
Toll Free: (866) 670-4010 Local: (972) 484-8500  
[www.AccurateConnections.com](http://www.AccurateConnections.com)*

## **Telco Assemblies**

- 25 Pair Category 3
- 25 Pair Category 5e
- 32 Pair DS1/DS2
- Shielded or Unshielded
- PVC or Plenum



## **Hydra Assemblies**

- Category 3
- Category 5
- Individual Legs
- 25 Pair Fan-out
- Custom Styles and Configurations

1700 Capital Avenue, Suite 100, Plano, TX 75074  
Toll Free: (866) 670-4010 Local: (972) 484-8500  
[www.AccurateConnections.com](http://www.AccurateConnections.com)

## **Other Assemblies**

- RS232, V.35
- Video Assemblies
- Audio Video Bundles
- Harnesses



This does not cover all of our offerings. We can design and document custom cable assemblies to your specifications, provide custom labeling, and packaging.

## **Coax and Triax Assemblies**

- Central Office, DS-3, DS-4
- Multicoax Bundles
- Triax Camera Cable Assemblies, 3/8" and 1/2"
- Most Coax and Connector Types



1700 Capital Avenue, Suite 100, Plano, TX 75074  
Toll Free: (866) 670-4010 Local: (972) 484-8500  
[www.AccurateConnections.com](http://www.AccurateConnections.com)

# Warranty

**ACCURATE CONNECTIONS, INC.** warrants the original product or service to the purchaser. The Accurate Connections product or service for which the customer received this warranty was designed, developed, and/or fabricated using all due reasonable commercial care and good manufacturing practices. Accurate Connections product or service shall be free from defects in material and workmanship for one year. Accurate Connections sole obligation under this warranty is to repair or replace the product, at Accurate Connections option.

**WARRANTY LIMITATIONS:** The duration of any implied warranty or condition of merchantability, fitness for a particular purpose, or otherwise on this product shall be limited to the duration of the express warranty set forth above. In no event shall Accurate Connections be liable for any loss, inconvenience or damage, whether direct, incidental, consequential, or otherwise, resulting from breach of any express or implied warranty or condition, of merchantability, fitness for a particular purpose or otherwise with respect to this product, except as set forth herein. This warranty gives you specific legal rights, and you may also have other rights, which may vary, from location to location. This warranty will be interpreted pursuant to the laws of the United States and the State of Texas. Accurate Connections is not responsible for any errors in translation of this warranty and/or any product instructions. This warranty is not intended to confer any additional legal, jurisdictional, or warranty rights to you other than those set forth herein or required by law. If any portion of this warranty is held to be invalid or unenforceable for any reason, such finding will not invalidate any other provision.

**WARRANTY EXCLUSIONS:** It is the customer's responsibility to regularly examine the product to determine the need for normal service or replacement. This warranty does not cover the following:

- Products that have been modified, neglected, poorly maintained, misused, abused, involved in accidents, or natural disasters.
- Damage occurring during shipment of the product (such claims must be presented directly to the freight forwarder or shipping company).
- Damage to the product resulting from improper maintenance or repair, using or installing parts, and/or accessories not compatible with the product's original intended use, or failing to follow product warnings and usage instructions.
- Damage or deterioration to the surface finish, aesthetics, or appearance of the product
- The labor costs required to remove and/or refit and readjust the product covered by this warranty.
- Normal wear and tear to the product.
- Any products for which the customer does not follow the warranty procedures outlined above.